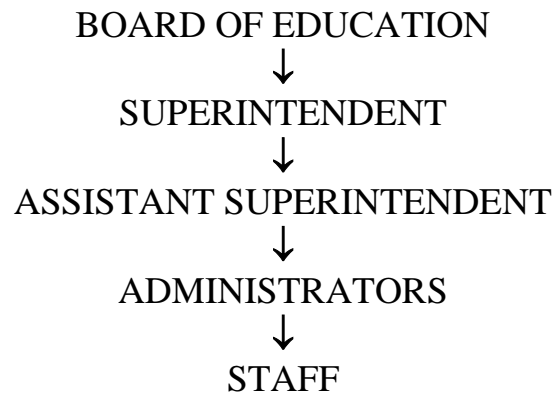


ADMINISTRATIVE PROCEDURE

Chain of Command

MORTON COMMUNITY UNIT SCHOOL DISTRICT 709

**CHAIN OF COMMAND
FOR DECISION MAKING**



In case of a serious emergency, steps may be jumped to the highest level administrator available in the district.

ADOPTED: April 4, 2000
REVISED: July 12, 2005
REVISED: June 28, 2010
REVISED: August 23, 2013