



Panorama Education  
 24 School Street  
 4th Floor  
 Boston MA 02108  
 United States

# Invoice

#INV6234

06/14/2021

**Bill To**

Morton School District 709 (IL)  
 IL  
 United States

**TOTAL**

**\$9,000.00**

**Due Date: 07/14/2021**

Terms	Due Date	PO #	Sales Rep	Shipping Method	Partner
Net 30	07/14/2021		tlohela@panoram aed.com		

Description	Amount
Panorama Platform License Fee: "Access to Platform and Support (as defined in the Terms and Conditions): Survey administration, analysis and reporting. * Student surveys * Roster integration with [NAME] SIS * Access to Panorama's Playbook and library of SEL intervention strategies * Intervention tracking and reporting * Check-in surveys"	\$4,000.00
"Access to Platform and Support (as defined in the Terms and Conditions): Survey administration, analysis and reporting. * Teacher/Staff Surveys"	\$1,500.00
Technical Support	\$2,000.00
Virtual PD session up to 2 hours in length for up to 50 participants (larger groups are supported for webinar-style facilitation).	\$1,500.00

<b>Subtotal</b>	\$9,000.00
<b>Tax (0%)</b>	\$0.00
<b>Total</b>	\$9,000.00

**Remittance Information**

MAIL CHECKS TO:  
 Panorama Education, Inc.  
 Dept LA 25164  
 Pasadena, CA 91185-5164

WIRE / ACH INSTRUCTIONS:  
 Bank Name: Silicon Valley Bank  
 Bank Address: 3003 Tasman Drive  
 Santa Clara, CA 95054



INV6234



Panorama Education  
24 School Street  
4th Floor  
Boston MA 02108  
United States

**Invoice**  
**#INV6234**  
06/14/2021

SWIFT Code (foreign wires only): SVBKUS6S  
ABA / Routing Number: 121140399  
Account Number: 3302719705



INV6234

# Partnership options with Panorama Education

Description of Services	
<p><b>Panorama Surveys Platform License Fee (SEL Surveys)</b></p> <ul style="list-style-type: none"> <li>• Access to Platform and Support (as defined in the Terms and Conditions): Survey administration, analysis and reporting</li> <li>• Feedback surveys: Student and staff</li> <li>• SEL surveys: SEL measurement</li> <li>• Resources covering survey creation, administration, and support with data inquiry</li> <li>• Access to Panorama's Playbook</li> <li>• Ongoing access to check-ins tool and intervention tracking</li> </ul>	
<p><b>Panorama's Support Package (included)</b></p> <ul style="list-style-type: none"> <li>• Named single Panorama point of contact who provides proactive technical support and guidance on Panorama's best practices</li> <li>• Resources covering survey creation, administration, and support with data inquiry</li> <li>• Proactive telephone outreach from Panorama contact at least twice per year</li> <li>• Unlimited email support from Panorama's product support team for school personnel and survey respondents</li> <li>• Access to virtual training sessions, webinars, newsletters, and other resources</li> </ul>	
<p><b>Panorama's Professional Development (included)</b></p> <ul style="list-style-type: none"> <li>• Two (90 min) virtual data inquiry and action planning workshops for up to 50 participants</li> <li>• Facilitators help educators cultivate a deep understanding of the data and empower participants to identify root causes before action planning</li> </ul>	
<p><b>Panorama's User Guides:</b> Panorama's survey and SEL user guides containing survey content and research behind surveys:</p> <ul style="list-style-type: none"> <li>• <a href="#">Student Survey</a> (including school climate surveys)</li> <li>• <a href="#">Teacher Survey</a></li> <li>• <a href="#">Social-Emotional Learning Survey</a></li> <li>• <a href="#">Teacher Perception of Students' SEL Guide</a></li> </ul>	

Partnership Cost	Cost
<p><b>Panorama Education: Social Emotional Learning + Intervention Tracking</b> (professional development included)</p>	\$9,000

# Panorama Education: Overview

Panorama helps educators use data to support each student’s needs, and helps leaders build great schools. Our support covers the following areas:

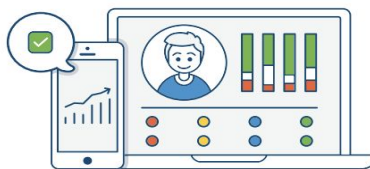
1. Panorama provides tools to collect valid and reliable feedback about a wide range of the topics that matter most—from engagement and communication, to school climate and culture.
2. Panorama helps school & districts measure and understand students’ Social Emotional Learning (SEL) skills in three core areas: student competencies, student supports and environments, and teacher skills and perspectives
3. Panorama also offers to measure social-emotional learning and integrate with SIS/data systems to create a system of interactive, flexible dashboards to support intervention tracking with Panorama Student Success.

## A powerful technology platform to support the whole child



### Social-Emotional Learning

Understand and support each students’ social-emotional learning—the skills that are key for success in school and life.



### Student Success

Monitor every student’s progress across academics, attendance, behavior, and social-emotional learning in one place.



### Feedback Surveys

Collect reliable feedback from students, families, teachers, and staff about school climate and engagement.

#### ✓ Research-backed surveys

Use groups of questions from Panorama’s survey instruments to securely collect valid and reliable data from stakeholders.

#### ✓ Advanced data analytics

Visualize your data using dashboards and heatmaps. Disaggregate data across subgroups and compare to our national benchmarks.

#### ✓ K-12 focus and support

Our team understands the challenges facing your school or district. We provide dedicated support and offer training that builds data capacity.

TRUSTED BY 11,500+ SCHOOLS IN DISTRICTS NATIONWIDE



# Panorama Education for Social-Emotional Learning



Panorama’s SEL measures were developed by education researchers and practitioners, including researchers at UC Santa Barbara and the Harvard University Graduate School of Education, as well as our partners at Transforming Education and the CORE districts. Measures include student self-reports, student perceptions of the school environment and supports, and teachers’ perspectives and skills.

Panorama’s SEL measures are grouped into three categories: student competencies, student supports and environment, and teacher skills and perspectives.

## Panorama’s SEL Measures



### Student Skills & Competencies



### Student Supports & Environments

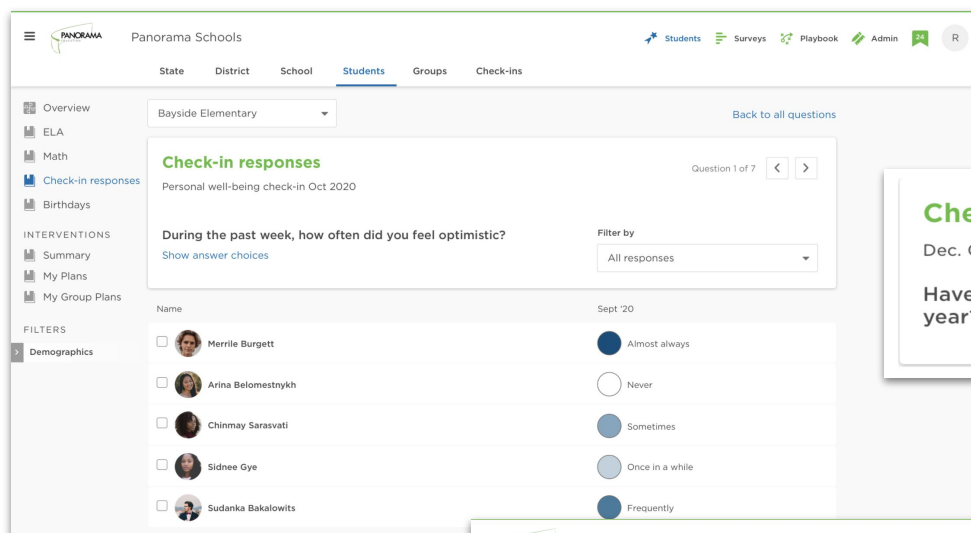


### Teacher Skills & Perspectives

Student Competencies	Student Supports and Environment	Teacher Skills and Perspectives
<b>Recommended Measures</b>		
Grit	Teacher-Student Relationships	Teacher Self-Reflection
Growth Mindset	Sense of Belonging	Professional Learning About SEL
Self-Management	School Safety	School Climate
Social Awareness		Resources for Student Support
Self-Efficacy		
<b>Supplemental Measures</b>		
Learning Strategies	Engagement	Educating All Students
Classroom Effort	Rigorous Expectations	
Social Perspective-Taking <i>(only for students in grades 6-12)</i>	Valuing of Specific Subjects (ELA, Math, Social Studies, Science)	
Self-Efficacy in Specific Subjects (ELA, Math, Social Studies, Science)	Valuing of School	
Emotion Regulation		

# Check-in Tool

Use check-ins to routinely ask students about their well-being, learning environment, relationships, and more—and get data back immediately to inform action at the system level as well as to support individual students.



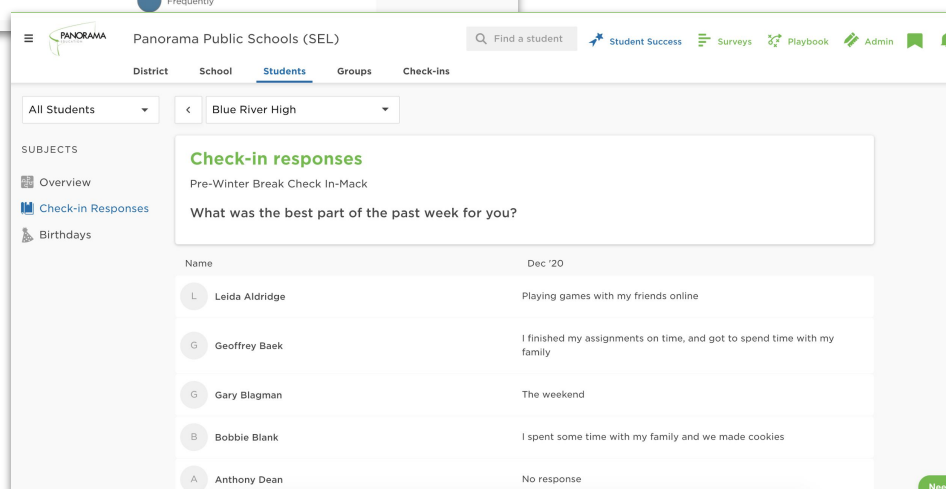
The screenshot shows the Panorama Schools interface for Bayside Elementary. The main content area displays a 'Check-in responses' card for a 'Personal well-being check-in Oct 2020'. The question is 'During the past week, how often did you feel optimistic?' with a filter set to 'All responses'. Below the question is a table of student responses for September 2020:

Name	Response
Merrile Burgett	Almost always
Arina Belomestnykh	Never
Chinmay Sarasvati	Sometimes
Sidnee Gye	Once in a while
Sudanka Bakalowits	Frequently



**Check-in responses**  
Dec. Check-in  
Have you been able to make any new friends this year? Why or why not?

**Check-ins** are an important complement to your annual district-wide measurement of students' perceptions of **climate, culture, and social-emotional skills and competencies.**



The screenshot shows the Panorama Public Schools (SEL) interface for Blue River High. The main content area displays a 'Check-in responses' card for a 'Pre-Winter Break Check In-Mack'. The question is 'What was the best part of the past week for you?'. Below the question is a table of student responses for December 2020:

Name	Response
L Leida Aldridge	Playing games with my friends online
G Geoffrey Baek	I finished my assignments on time, and got to spend time with my family
G Gary Blagman	The weekend
B Bobbie Blank	I spent some time with my family and we made cookies
A Anthony Dean	No response

## What's included?

- District, school, and classroom leaders can check in with all or a subset of students
- Based on daily-updating rosters, making set-up simple and fast
- Select multiple choice and free response questions from an item bank
- Results will appear in the Panorama platform at the question and student level
- Use MTSS tools (group creation, intervention assignment, and intervention tracking) to plan and track the actions taken in response to check-ins.

# Survey Platform Functionality

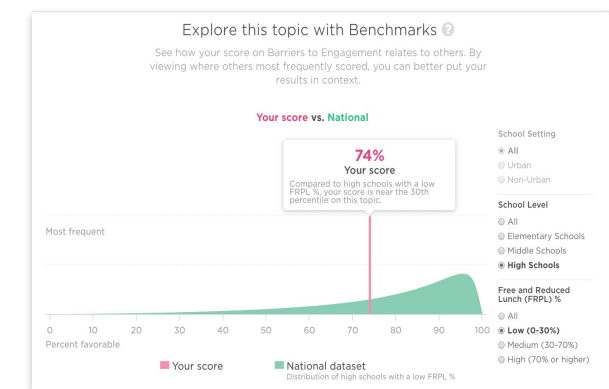
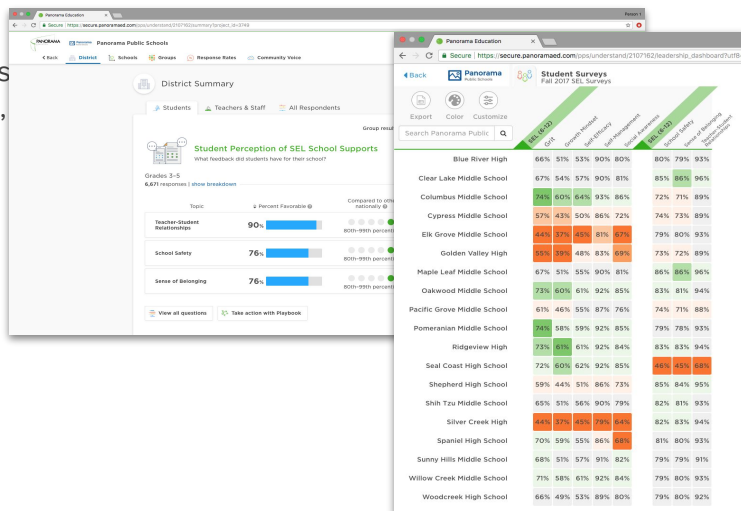
## Survey Administration, Reports & Analytics

### Explore trends across your entire district

Panorama's action-oriented interface allows users to look at aggregate results at the district, school, and classroom levels.

Users can also disaggregate results across custom demographics, including gender, grade level, ELL status, FRPL status and attendance.

Reports and permissions can be customize, ensuring that users can access only the data relevant to their roles.

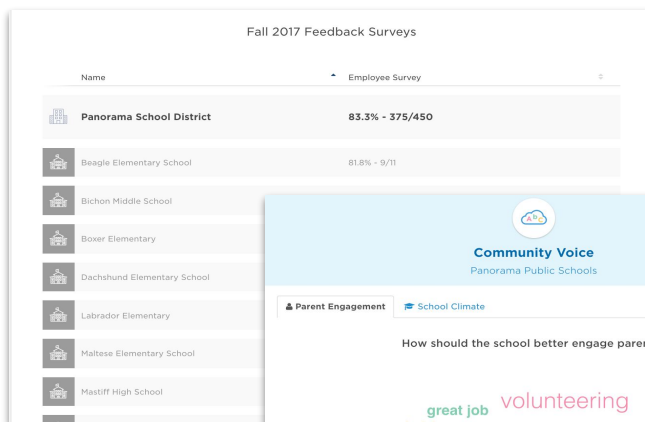


### Put results in context with national & peer benchmarks

To help users contextualize their survey results, Panorama offers comparisons of school and district results to our national dataset. Within benchmarks, users have the ability to customize comparisons to include schools that share your school setting, grade band, or % FRPL status. Panorama's national benchmarks span more than 12,000 schools and 9 million students, families, teachers, and staff members across diverse geographic areas, school types, and achievement levels.

### Monitor Response Rates Daily

We work directly with district administrators to plan targeted outreach, to deliver technical assistance, and to monitor and take targeted action to improve response rates in real time.



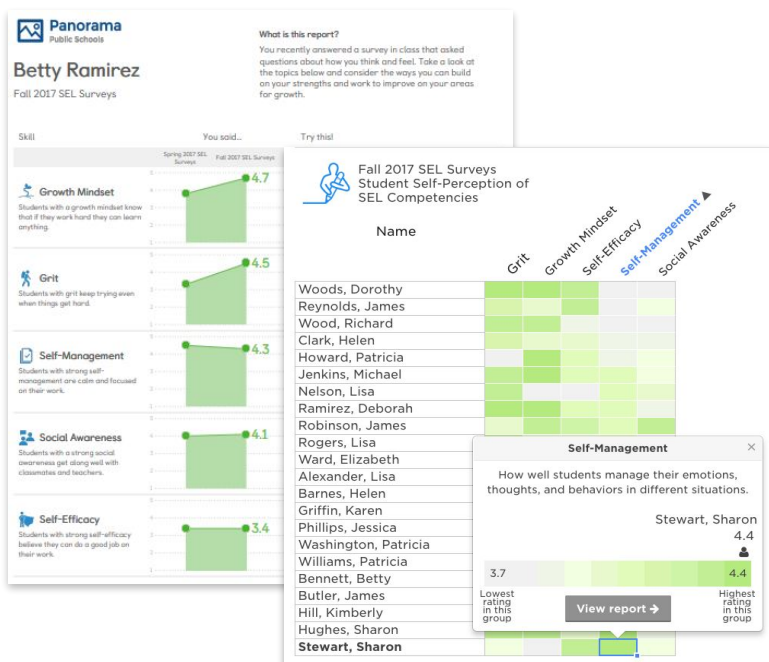
### Elevate stakeholder voice

Panorama's Community Voice tool analyzes free responses and surfaces common trends, eliminating the time spent sifting through open-ended responses.



# Survey Platform Functionality

## Survey Administration, Reports & Analytics

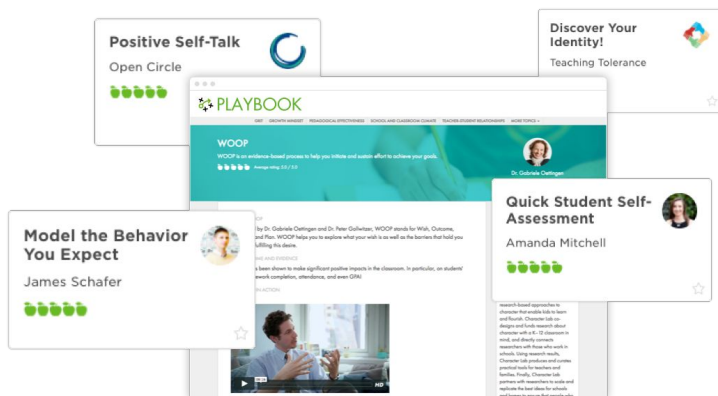
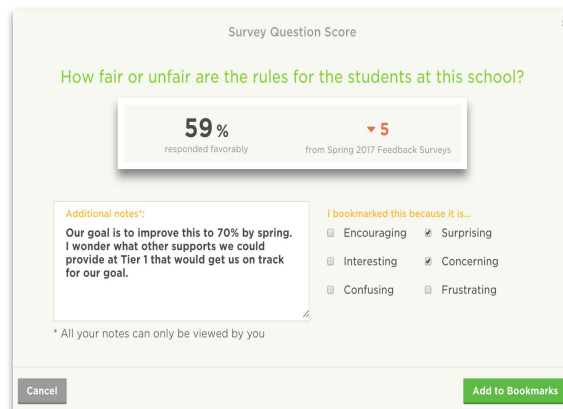


### Meet the Needs of Each Student

Panorama Partners will have the option of student-level reporting to see how individuals are developing critical SEL skills and mindsets. If a student is exhibiting challenges academically or behaviorally, Staff will be equipped with knowledge about what might be contributing to those challenges and the ability to monitor growth over time.

### Set and track progress towards goals with bookmarks

Bookmarks enable users to flag their most interesting results, and save them to a PowerPoint or PDF. Bookmarks make it simple for district and school leaders to set goals, and drive improvement. For California districts, Bookmarks are often a key support for LCAP and SPSA planning.



### Support professional learning with Playbook

All users will have access to Playbook, Panorama's online professional development platform. Playbook includes instructional strategies and classroom resources from leading non-profits like Second Step, Character Lab, Teaching Tolerance, Move This World, and Diversity Talks.

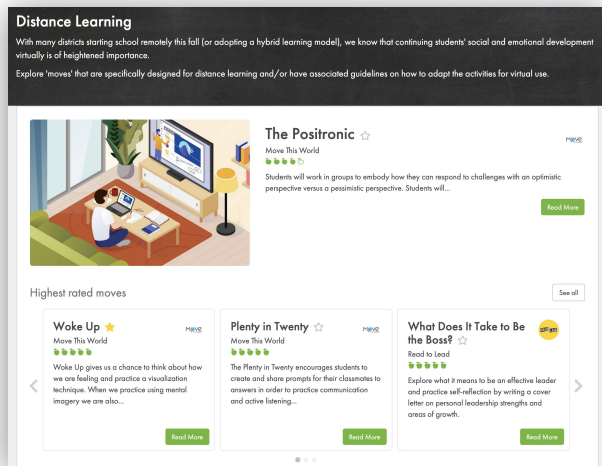


# Playbook: SEL Lesson Plans and Resources

Playbook is an online platform built to empower teachers. Sparked by conversations with teachers and administrators in our social-emotional learning work, Playbook helps answer the question of “what’s next” for teachers after they receive their student SEL data. Playbook includes instructional strategies and classroom resources from leading non-profits like Second Step, Character Lab, and Open Circle.

## Explore Strategies by SEL Topic

Playbook includes instructional strategies and classroom resources aligned to topics like Growth Mindset and School Climate. Quickly filter by topic to identify the lesson plans and strategies that will best support the needs of their students, in response to their SEL results. Every topic also includes relevant research by leading experts in SEL and child development, making the Playbook a key resource for building the capacity of educators to support SEL growth in students.



## Lessons for Distance Learning

Content creators like Move this World, OpenCircle, Breathe for Change provide lesson plans and strategies that can be easily adapted for Remote Learning. Panorama’s teaching & Learning team will also be available to recommend further distance learning accommodations as requested. Educators will also have access to Professional Development resources and online courses designed to help build their expertise and skills to lead SEL initiatives in the classroom.

## Cultivate Students’ SEL through targeted supports and lessons

Within each topic page, you’ll find lesson plans unique to that topic, as well as rankings of how effective that strategy has been in other classrooms around the nation. Educators can collaborate with one another through Panorama’s Playbook to identify which lessons will best support the students in their classroom.

